

taking even more
care over eye care...



...our most
detailed eye
examination
yet!



YATES & SUDELL
OPTICIANS & CONTACT LENS PRACTITIONERS

At Yates & Suddell we are committed to providing you with the very best in professional eye-care services.

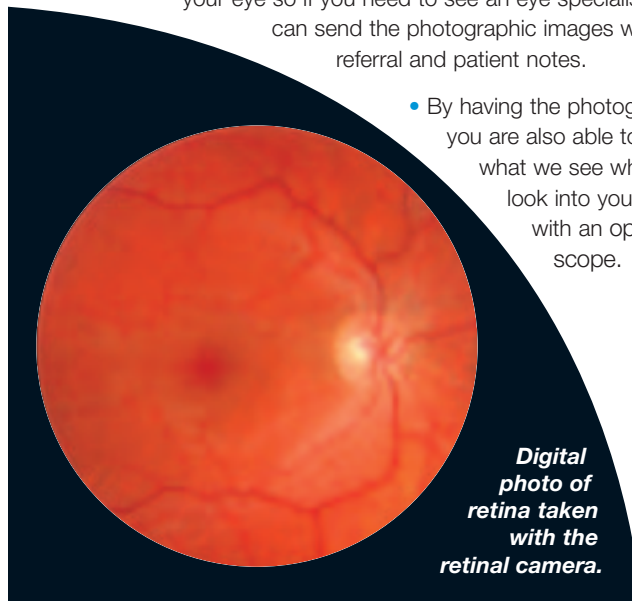
That's why we recently bought a Digital Retinal Camera, one of the most advanced eye examination devices available.

The Camera is so powerful it allows us to take an extremely detailed and full colour picture of the back of your eye - the retina. The process is quick, simple and painless.

patient benefits:

The main benefits of having your eyes examined with the Digital Retinal Camera are:

- It helps us find abnormalities sooner enabling an earlier diagnosis than was previously possible - this is good news for patients because many eye conditions can be treated without loss of vision if detected early enough.
- Because the image is stored on a computer we are able to check for changes from one visit to the next by comparing the most recent photograph with images taken at previous examinations.
- Over time, we are able to build up a visual history of the back of your eye so if you need to see an eye specialist we can send the photographic images with your referral and patient notes.
- By having the photograph you are also able to see what we see when we look into your eyes with an ophthalmoscope.



patient consent form

The Digital Retinal Camera is proving very popular with our patients and is certainly helping us to detect abnormalities earlier.

Most of our patients are now choosing to have a photograph taken as they recognise the considerable benefits to their long term eye care.

For patients wanting a photograph there will be an additional fee. The photograph will be stored on a computer for future reference and the findings will be discussed with you.

If you would like to have a photograph taken with the Digital Retinal Camera as part of your eye examination, please tick the appropriate box:

YES - I would like a retinal photograph taken at a cost of £10.00, which is in addition to the cost of a normal eye examination.

NO thank you - I don't require a retinal photograph as part of the eye examination.

Signed

Print Name

Date

Please bring this with you when you attend your eye examination.

*Yates & Suddell strongly recommend
you have your eyes examined regularly
as part of your normal health check.*



YATES & SUDDELL
OPTICIANS & CONTACT LENS PRACTITIONERS

Looking Good with
Yates & Suddell...
professionally qualified
opticians and contact lens
practitioners...
guaranteeing value for
your money!

bury practice

15-19 Minden Parade, Bury BL9 0QG

Tel: 0161 764 2209

email: bury@yatesandsuddell.co.uk

visit our website:

www.yatesandsuddell.co.uk